

ASERVO EQUIHALER- ciclesonide spray, metered
Boehringer Ingelheim Animal Health USA Inc.

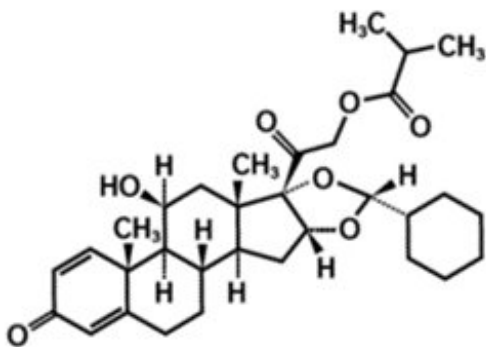
Aservo® EquiHaler®
(ciclesonide inhalation spray)
343 mcg/actuation
Glucocorticoid
For intranasal inhalation in horses only

Caution:

Federal law restricts this drug to use by or on the order of a licensed veterinarian.

Description:

ASERVO EQUIHALER (ciclesonide inhalation spray) is a non-pressurized metered dose inhaler and drug cartridge combination containing a solution of 30 mg/mL of the prodrug ciclesonide, which is enzymatically converted to the pharmacologically active metabolite desisobutyrylciclesonide (des-ciclesonide) following inhalation. Des-ciclesonide is a glucocorticoid class of corticosteroid. Each actuation releases 343 mcg of ciclesonide. Inactive carrier ingredients include alcohol, purified water, and hydrochloric acid. The structural formula for ciclesonide is:



Indication:

ASERVO EQUIHALER is indicated for the management of clinical signs associated with severe equine asthma in horses.

Dosage and Administration:

For intranasal inhalation use only. ASERVO EQUIHALER may be used as part of the overall management of severe equine asthma in addition to other appropriate strategies to control clinical signs, such as environmental changes and bronchodilator therapy, as needed.

The initial dose of ASERVO EQUIHALER is 8 actuations (2744 mcg ciclesonide) twice daily

for 5 days, followed by 12 actuations (4116 mcg ciclesonide) once daily for 5 days.

Total treatment duration is 10 days	
Treatment days 1 to 5	8 actuations (puffs) Twice daily
Treatment days 6 to 10	12 actuations (puffs) Once daily

Prior to use, please refer to the detailed instructions for the handling and use of ASERVO EQUIHALER provided in this "User Manual". ASERVO EQUIHALER should only be administered in the left nostril of the horse. Following careful and proper insertion, the ASERVO EQUIHALER should have a snug fit in the left nostril. A snug fit is required to ensure the horse receives a complete dose of ASERVO EQUIHALER.

Contraindications:

Do not use in horses with known hypersensitivity to ciclesonide or corticosteroids.

Warnings / Precautions:

Human Warnings: Not for use in humans. Keep this and all medications out of the reach of children. In case of accidental inhalation, seek medical advice immediately and show the package insert or the product label to the physician.

People with known hypersensitivity to ciclesonide or any of the excipients should avoid contact with ASERVO EQUIHALER.

Animal Safety Warnings and Precautions: Safe use of ASERVO EQUIHALER has not been evaluated in pregnant or lactating mares.

Clinical and experimental data have demonstrated that corticosteroids administered orally or by injection to animals may induce the first stage of parturition if used during the last trimester of pregnancy and may precipitate premature parturition followed by dystocia, fetal death, retained placenta, and metritis. Additionally, corticosteroids administered during pregnancy can be teratogenic. Therefore, ASERVO EQUIHALER should only be used in pregnant mares if the potential benefit justifies the potential risk to the fetus.

Administration of corticosteroids may worsen existing bacterial, fungal, or viral infection. Secondary infections should be ruled out before prescribing ASERVO EQUIHALER. Inhaled corticosteroids should be used with caution, if at all, in horses with active infection of the respiratory tract. If clinical signs do not improve or worsen despite administration of ASERVO EQUIHALER, the prescriber should consider additional diagnostic evaluation.

Due to the potential for exacerbation of clinical signs of laminitis, glucocorticoids should be used with caution in horses with a history of laminitis, or horses otherwise at a higher risk for laminitis.

Use with caution in horses with chronic nephritis, equine pituitary pars intermedia dysfunction (PPID), and congestive heart failure.

Concurrent use of other anti-inflammatory drugs, such as non-steroidal anti-inflammatory drugs (NSAIDs) or other corticosteroids, should be approached with caution. Due to the potential for systemic exposure, concomitant use of NSAIDs and corticosteroids may increase the risk of gastrointestinal, renal, and other toxicity. Consider appropriate wash out times prior to administering NSAIDs or additional corticosteroids.

Other Warnings: Do not use in horses intended for human consumption.

Adverse Reactions:

The clinical safety of ASERVO EQUIHALER was assessed in a vehicle-controlled, randomized, double-blind 10-day field study followed by a 90-day open-label, extended-use field safety phase. In this field study, 319 client- or university-owned horses received either ASERVO EQUIHALER or vehicle control (the identical device containing the vehicle with no ciclesonide) during Phase 1.

Following Phase 1, 108 horses were enrolled in Phase 2, during which they could receive treatment for up to an additional 3 months. All horses in Phase 2 received the ASERVO EQUIHALER. Three hundred nineteen horses (163 ciclesonide and 156 control) of various breeds, 6 to 34 years of age, and weighing approximately 450 to 1,850 pounds were included in the field-study safety analysis. Adverse reactions that were reported in Phase 1 are listed in Table 1, and adverse reactions that were reported in Phase 2 are listed in Table 2.

The most common adverse reaction reported was coughing either during or immediately following inhalation of the test article (both ASERVO EQUIHALER and vehicle control groups).

Leukocytosis and/or neutrophilia developed in Phase 1 in several horses in both treatment groups, and in eight horses in Phase 2. Some of these horses also had concurrent clinical signs of infection, such as fever, which may have contributed to the leukocytosis. One ASERVO EQUIHALER-treated horse developed fever and leukocytosis characterized by a mature neutrophilia on Day 10 that was not present at screening. Other horses had possible alternate explanations for a stress leukogram, such as pain from a hoof abscess or poor acceptance of the device which may have caused stress from the study procedures.

In Phase 1, three ASERVO EQUIHALER-treated horses had increases in serum sorbitol dehydrogenase (SDH) above the reference range on Day 10 (high values were 12.4, 18.1 and 30.4 U/L); their baseline values were within the reference range (2-6 U/L). None of these horses had clinical signs attributable to elevated SDH levels. One horse also had an increase in serum gamma-glutamyltransferase (GGT) compared to baseline, but the GGT value at baseline was already above the reference range. By Day 40 of Phase 2, and again when measured at Day 100, this horse's SDH and GGT values were within normal limits. In Phase 2, one horse developed an elevation in SDH (63.8 U/L) following the 6th course of ASERVO EQUIHALER treatment. This horse had elevations in alkaline phosphatase (269 U/L, reference range 76-262 U/L), aspartate aminotransferase (511 U/L, reference range 194-431 U/L), and GGT (128 U/L, reference range 9-37 U/L). Reported adverse events in this horse at various time points during the study included coughing, nasal discharge, tachycardia, and hyperthermia. After the visit at which abnormal blood work was detected, the owner opted to withdraw the horse from the

study (approximately Day 75).

In Phase 1, one horse developed severe hives 30 minutes after the fourth dose of ASERVO EQUIHALER. This horse was removed from the study due to this adverse reaction.

Table 1: Number (%) of Horses with Adverse Reactions in Phase 1 of field study

Adverse Reaction	ASERVO EQUIHALER (N=163) n (%)	Vehicle Control (N=156) n (%)
Cough	27 (16.6)	27 (17.3)
Nasal Discharge	17 (10.4)	17 (10.9)
Leukocytosis and/or neutrophilia	10 (6.1)	7 (4.5)
Sneezing	5 (3.1)	3 (1.9)
Nasal irritation/bleeding	2 (1.2)	3 (1.9)
Increase in serum Sorbitol Dehydrogenase (SDH)	3 (1.8)	0 (0)
Hives	1 (0.6)	0 (0)

* Horses may have had one or more reports of a given adverse reaction

Table 2: Number (%) of Horses with Adverse Reactions in Phase 2 of field study

Adverse Reaction	ASERVO EQUIHALER (N=100) n (%)
Cough	12 (12%)
Nasal Discharge	13 (13%)
Leukocytosis and/or neutrophilia	8 (8%)
Nasal irritation/bleeding	6 (6%)
Laminitis	3 (3%)
Sneezing	2 (2%)
Increase in serum Sorbitol Dehydrogenase (SDH)	1 (1%)

* Horses may have had one or more reports of a given adverse reaction

Laminitis was reported in three horses during Phase 2. Two of the horses were noted to have a history of or physical evidence of prior laminitic episodes. The third horse had no prior history of laminitis, was initially treated for thrush, and responded to conservative therapy within a few weeks. No definitive diagnosis of laminitis was made, and the examining veterinarian concluded the horse's environment played a role in the development of clinical signs.

In Phase 1, in both treatment groups, nasal soreness, bleeding, scabs in the nostril, and redness of the nostril were reported in five horses.

In Phase 2, horses were reported to have epistaxis (2 horses), blood tinged discharge (1 horse), nose bloody and raw (1 horse), sensitive nostril (1 horse), and bright pink

color of nasal mucus membranes (1 horse). One case of epistaxis was reported 9 days after the last dose administered, and one case was reported from the right nostril less than 24 hours following the last dose. The blood tinged discharge from the left nostril was reported 11 days following the last dose administered. In Tables 1 and 2, these similar clinical signs are summarized as nasal irritation/bleeding.

To report suspected adverse drug events and/or obtain a copy of the Safety Data Sheet (SDS) or for technical assistance, contact Boehringer Ingelheim Animal Health USA Inc. at 888-637-4251. For additional information about adverse drug experience reporting for animal drugs, contact FDA at 1-888-FDA-VETS or online at www.fda.gov/reportanimalae

Information for Horse Owners:

Please review the User Manual with horse owners to ensure they understand the entire contents. The User Manual includes important instructions regarding the proper handling and use of ASERVO EQUIHALER. Demonstration of the activation, administration and storage of ASERVO EQUIHALER with the horse owner is highly recommended.

Clinical Pharmacology:

Pharmacokinetics: A four period pharmacokinetic study was conducted using 6 average weight horses and 6 light weight horses. Each horse received the following dosing regimens:

Period 1: 12 actuations (4116 mcg ciclesonide/horse) as a single inhalation administration,

Period 2: 16 actuations (5488 mcg ciclesonide/horse) as a single inhalation administration,

Period 3: 8 actuations (2744 mcg ciclesonide/horse) twice a day for 4 consecutive days and once on the fifth day,

Period 4: 8 actuations (2744 mcg ciclesonide/horse) twice a day for 5 consecutive days followed by 12 actuations (4116 mcg/horse) once a day for 5 days.

Blood samples were collected at pre-dose, 0 minutes, 5 minutes, 15 minutes, 30 minutes, and 1, 2, 4, 6, 8, 10, 12, and 24 hours after a single inhalation administration of 2744, 4116, and 5488 mcg in periods 1, 2, 3, and after multiple doses of 2744 and 4116 mcg in Periods 3 and 4.

Urine samples were collected at 24 and 48 hours in Period 4. Plasma and urine samples were analyzed for ciclesonide and des-ciclesonide concentrations using validated liquid chromatograph/ mass spectrometry methods.

Ciclesonide was rapidly metabolized to des-ciclesonide; there were quantifiable concentrations of des-ciclesonide in most horses at 5 minutes post-dose. Urine concentrations of ciclesonide and des-ciclesonide were below the limit of quantification at 24 and 48 hours after inhalation administration of 2744 mcg twice a day for 5 days followed by 4116 mcg once a day for 5 days. Table 3 summarizes the results of the pharmacokinetic analysis for des-ciclesonide in average and light weight horses

(adjusted for body weight) after inhalations of 2744 mcg ciclesonide twice a day for 5 days followed by inhalations of 4116 mcg ciclesonide once a day for 5 days.

Table 3: Mean (\pm standard deviation; SD) pharmacokinetic parameters of des-ciclesonide after inhalations of 2744 mcg ciclesonide twice a day for 5 days followed by inhalations of 4116 mcg ciclesonide once a day for 5 days

Parameter	Dose (mcg)	Average Horse	Light Horse
C _{max} (pg/mL)	2744	232.67 (40.89)	297.00 (92.0)
T _{max} (hrs)†	2744	0.50 (0.5-0.5)	0.50 (0.25-1.0)
AUC _{last} (hr*pg/mL)	2744	824.26 (81.77)	1087.07 (137.85)
t _{1/2} (hrs)	2744	5.00 (1.06)	5.94 (2.12)
C _{max} (pg/mL)	4116	297.50 (104.62)	493.00 (248.27)
T _{max} (hrs)†	4116	0.50 (0.5-1.0)	0.50 (0.5-1.0)
AUC _{last} (hr*pg/mL)	4116	1011.39 (291.72)	1550.31 (690.02)
t _{1/2} (hrs)	4116	6.08 (2.42)	9.75 (4.20)

C_{max} = maximum plasma concentration

†T_{max} = time to maximum concentration; median (range)

AUC_{last} = area under the concentration vs time curve to the last quantifiable concentration

t_{1/2} = half-life

The drug exposure of des-ciclesonide was higher and more variable in the light weight horses compared to the average weight horses. For des-ciclesonide in both average and light weight horses, there was a greater than dose proportional increase in C_{max} and AUC_{last} with an increase in dose from 2744 to 4166 mcg, after a single dose. There was minimal accumulation of des-ciclesonide after inhalations of 2744 mcg ciclesonide twice a day for 5 days followed by inhalations of 4116 mcg ciclesonide once a day for 5 days.

Mode of Action: The affinity of des-ciclesonide to human and rat lung glucocorticoid receptors is 120 times greater than the parent compound's affinity and 12 times greater than dexamethasone's affinity. Des-ciclesonide's anti-inflammatory properties are exerted via a wide range of inhibitory activities against cell types including mast cells, eosinophils, basophils, lymphocytes, macrophages, and neutrophils as well as against pro-inflammatory mediators such as histamine, eicosanoids, leukotrienes, and cytokines.

Effectiveness:

In a multi-center, vehicle-controlled, randomized, double-blind, field study, 320 horses were randomly allocated to receive either ASERVO EQUIHALER, the investigational veterinary product containing the active ingredient ciclesonide, or the control product, consisting of an identical inhaler device containing the vehicle with no ciclesonide. The study consisted of two phases, and 108 of the 320 enrolled horses participated in both

Phase 1 and Phase 2 of the study.

Phase 1 of the study consisted of a double-blind, 10-day evaluation of the effectiveness and safety of ASERVO EQUIHALER compared to vehicle control for the management of clinical signs associated with severe equine asthma in both client- and university-owned horses under field conditions. Modifications of the horse's environment were not allowed during Phase 1. Following completion of Phase 1, 108 horses participated in the 90-day open-label Phase 2 to evaluate the safety of ASERVO EQUIHALER during repeated use.

In Phase 1, a weighted clinical score (WCS) was calculated to assess both eligibility at study enrollment and treatment success at the conclusion of the study.

The WCS was comprised of nine clinical parameters (respiratory rate, nasal discharge, nasal flaring, abdominal lift, tracheal sounds, bronchial tones, crackles, wheeze, and cough) with a maximum score of 23. In order to enroll, horses were to have a WCS ≥ 11 (see Table 4), weigh at least 200 kg, have a diagnosis of severe equine asthma with observation of at least one clinical sign for 14 days or more prior to enrollment, have history of at least two previous episodes of labored breathing at rest, and have history of improvement with appropriate treatment (for example, glucocorticoid administration, bronchodilator administration, and/or change in environment). Two hundred fifty-eight horses (134 ASERVO EQUIHALER and 124 control) were included in the effectiveness analysis. Horses that were not fully dosed after enrollment due to the horse's refusal to accept the device were included in the analysis as treatment failures.

Table 4: Weighted Clinical Score

Parameter	Score: Description
Respiratory rate (breaths/minute)	0: <16 bpm 1: 16-20 bpm 2: 21-25 bpm 3: 26-30 bpm 4: >30 bpm
Nasal Discharge	0: None 1: Serous 2: Mucous 3: Mucopurulent
Nasal Flaring	0: None 1: Present
Abdominal Lift	0: None 1: Mild movement of abdomen and/or thorax and/or anus (with or without perceptible heaves line) 3: Pronounced movement of abdomen and/or thorax and/or anus (with or without perceptible heaves line)
Tracheal Sounds	0: Normal 1: Increase in intensity 3: Mucus Movement
Bronchial Tones	0: Normal 2: Audible ventral and/or dorsal

	sounds
Crackles	0: None 2: Present
Wheezes	0: None 2: Present
Cough	0: None 1: Inducible by moderate pressure signal on larynx (only to be checked in the absence of intermittent or paroxysmal cough) 2: Intermittent 3: Paroxysmal

A horse was considered a treatment success if there was a reduction in the WCS by at least 30% between Day 0/1 and Day 10, and had a Day 10 WCS \leq 14. In this study, 52% of horses treated with ASERVO EQUIHALER vs. 33% of the horses treated with vehicle control had treatment success ($p=0.0187$), demonstrating the ASERVO EQUIHALER (ciclesonide inhalation spray) is effective for the management of clinical signs associated with severe equine asthma in horses.

Phase 2 provided field safety and use information for repeated 10-day courses of treatment under conditions of use, including use with other appropriate treatment strategies. During Phase 2, 88 horses completed the full 100-day study. The most common reason for early withdrawal was perceived lack of effectiveness ($n=7$). Horses were to be prescribed a 10-day course of the ASERVO EQUIHALER when the WCS was ≥ 9 . Eight out of 108 did not receive additional inhaler devices. Of the 100 horses who qualified for retreatment, 52 (52%) qualified for one to three additional courses of treatment. Two horses that were in the ASERVO EQUIHALER group during Phase 1 received nine additional courses of treatment in Phase 2, resulting in 100 days of exposure to ASERVO EQUIHALER. Twenty-three (23%) horses received seven to nine courses of treatment during Phase 2. Concomitant medications and environmental changes intended for the overall management of severe equine asthma were allowed in Phase 2. The most commonly prescribed concomitant medications included bronchodilators and antihistamines. Systemic antimicrobials were prescribed in six horses where the clinical signs of severe equine asthma were not adequately controlled, clinical signs worsened despite continued administration of ASERVO EQUIHALER, or clinical signs of infection developed.

Two horses received dexamethasone at early study withdrawal because their disease was insufficiently controlled.

The most common environmental changes implemented during Phase 2 included soaking or steaming the hay, changing the forage source to either hay cubes or silage, changing the hay source (including stopping access to round bales), and increasing time out on pasture compared to time spent in the barn.

Animal Safety:

In a 1-month target animal safety study, 32 healthy adult horses (16 mares and 16 geldings) were assigned to 1 of 4 treatment groups, with 8 horses per group. Each

treatment group contained 6 average weight horses (371.9 to 539.8 kg; mean 477.0 kg) and 2 light weight horses (121.5 to 260.5 kg; mean 179.5 kg). Light weight horses were specifically included to assess the safety of the highest mg ciclesonide/kg body weight dose.

Horses were randomized into four treatment groups, each receiving a different multiple of the therapeutic dose for 30 days (three times the treatment duration) administered with the nasal inhaler device. The treatment groups received 0X (vehicle control), 1X, 2X, and 3X the therapeutic dose of ciclesonide, respectively. Each treatment group included a total of 8 horses, six average weight horses (3 males and 3 females) and two light weight horses (1 male and 1 female). Horses in the control group received the same number of actuations as the highest dose group (3X) from the nasal inhaler device with vehicle only.

Mild mucoid to seromucoid nasal discharge was observed in all treatment groups, including controls, and did not appear to increase after treatment. In general, for the 0X, 2X, and 3X groups, the number of different fungal species isolated from the nares increased by Day 30; however, the result may have been an effect of extended time in the barn with direct contact with other horses and the environment rather than related to treatment with the inhaler. One horse cultured *Candida* species post-treatment, and that horse had no abnormal clinical signs. The dosing was intended to mimic twice daily dosing for the first 15 days, and then the once daily dosing for the second half of the study.

Facial asymmetry or deviation of the muzzle was observed in two horses during the study in the ciclesonide-treated groups. The signs resolved in one horse prior to the study conclusion.

No other related abnormal signs were observed, and no pathologic findings were correlated with this abnormality.

Cortisol levels were measured as a marker for suppression of the hypothalamic-pituitary-adrenal axis by systemic action of corticosteroids. Two light weight horses in the 3X ciclesonide-treatment group had values (16.3 and 14.1 ng/mL) that were lower than any other values recorded in the study (including baseline values and values from control horses), and lower than the normal reference range (27.6-73.2 ng/mL) on Day 14 (the end of the twice daily treatment period). At Day 29, one horse's cortisol value returned to within the reference range (55.9 ng/mL) and the other remained low (15.9 ng/mL). These reductions in cortisol values in the smallest horses in the highest dose group may represent cortisol suppression from corticosteroid administration; however, neither of these horses had adverse events attributable to administration of ciclesonide.

Sorbitol dehydrogenase (SDH) levels were not statistically significantly different between ciclesonide treatment groups and the control group. However, one control horse (Day 14, SDH 13.6 U/L), one light weight horse in the 2X treatment group (Day 29, SDH 9.3 U/L), and two light weight horses in the 3X treatment group (Day 29, SDH values of 10.4 and 8.8 U/L) had SDH values that were above the reference range (reference range 1-8 U/L). These values did not correspond with increases in other liver enzymes and the horses remained clinically normal.

Storage Information:

Store at 15-30°C (59°-86°F), with excursions permitted up to 40°C (104°F). Protect from freezing.

Use within 12 days of activation.

How Supplied:

ASERVO EQUIHALER is supplied as one inhaler with a pre-inserted cartridge consisting of a plastic container crimped in an aluminum cylinder which contains inhalation solution for 140 treatment actuations (puffs).

Approved by FDA under NADA # 141-533

Marketed by:

Boehringer Ingelheim Animal Health USA Inc.

Duluth, GA 30096

Made in France

ASERVO® and EQUIHALER® are registered trademarks of Boehringer Ingelheim Vetmedica GmbH, used under license.

The Horse Head Logo is a trademark of Boehringer Ingelheim Animal Health USA Inc.

© 2020 Boehringer Ingelheim Animal Health USA Inc. All rights reserved.

449301-00

Revised 02/2020

Principal Display Panel - Label, 140 actuations (puffs)

NDC 0010-4493-01

Aservo® Equihaler®

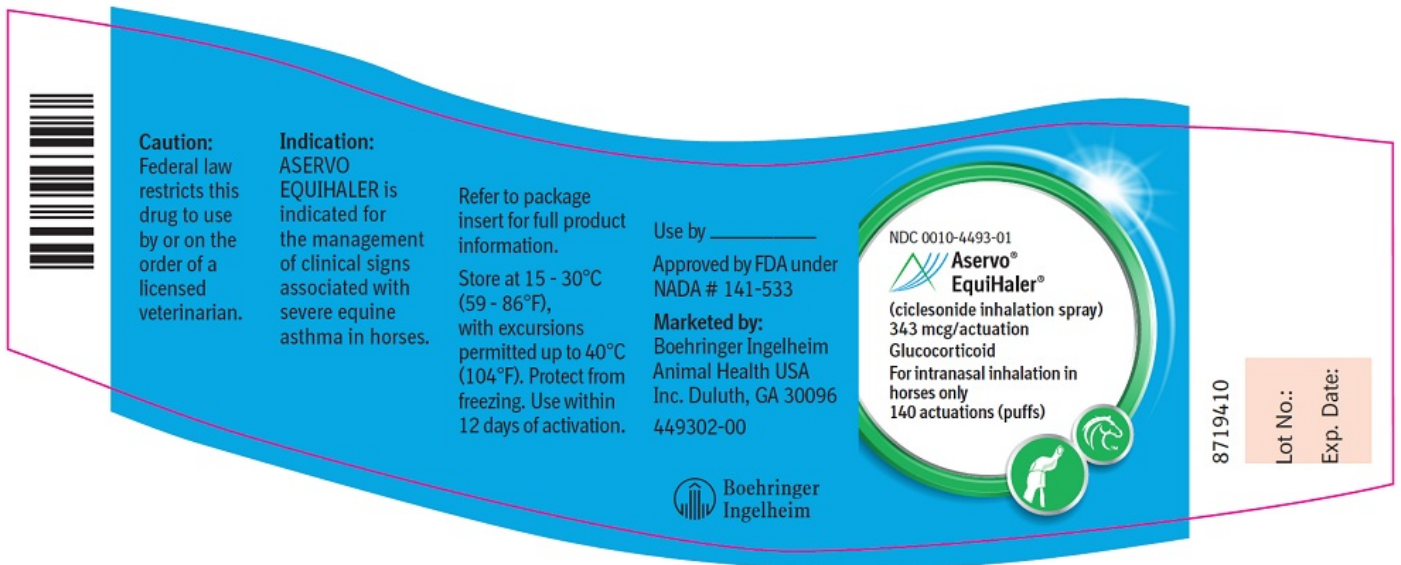
(ciclesonide inhalation spray)

343 mcg/actuation

Glucocorticoid

For intranasal inhalation in horses only

140 actuations (puffs)



Principal Display Panel - Display Carton, 140 actuations (puffs)

NDC 0010-4493-01

Aservo® EquiHaler

(ciclesonide inhalation spray)

343 mcg/actuation

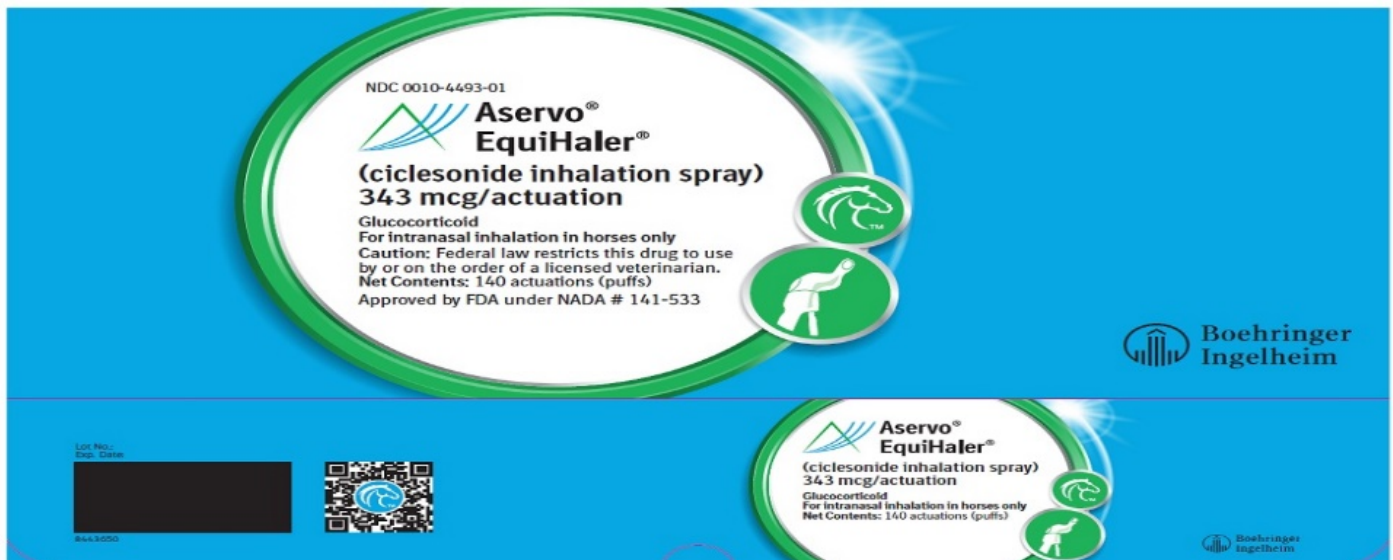
Glucocorticoid

For intranasal inhalation in horses only

Caution: Federal law restricts this drug to use by or on the order of a licensed veterinarian.

Net Contents: 140 actuations (puffs)

Approved by FDA under NADA # 141-533



Indication:
ASERVO EQUIHALER (ciclesonide inhalation spray) is indicated for the management of clinical signs associated with severe equine asthma in horses.

Dosage and Administration:
For intranasal inhalation use only. ASERVO EQUIHALER may be used as part of the overall management of severe equine asthma in addition to other appropriate strategies to control clinical signs, such as environmental changes and bronchodilator therapy, as needed.

The initial dose of ASERVO EQUIHALER is 8 actuations (2744 mcg ciclesonide) twice daily for 5 days, followed by 12 actuations (4116 mcg ciclesonide) once daily for 5 days.

Total treatment duration is 10 days	
Treatment days 1 to 5	8 actuations (puffs) Twice daily
Treatment days 6 to 10	12 actuations (puffs) Once daily

Prior to use, please refer to the detailed instructions for the handling and use of ASERVO EQUIHALER provided in the "User Manual".

ASERVO EQUIHALER should only be administered in the left nostril of the horse. Following careful and proper insertion, the ASERVO EQUIHALER should have a snug fit in the left nostril. A snug fit is required to ensure the horse receives a complete dose of ASERVO EQUIHALER.

Contraindications:
Do not use in horses with known hypersensitivity to ciclesonide or corticosteroids.

Warnings/Precautions:
Human Warnings: Not for use in humans. Keep this and all medications out of the reach of children. In case of accidental inhalation, seek medical advice immediately and show the package insert or the product label to the physician.

People with known hypersensitivity to ciclesonide or any of the excipients should avoid contact with ASERVO EQUIHALER. **Animal Safety Warnings and Precautions:** Safe use of ASERVO EQUIHALER has not been evaluated in pregnant or lactating mares. Clinical and experimental data have demonstrated that corticosteroids administered orally or by injection to animals may induce the first stage of parturition if used during the last trimester of pregnancy and may precipitate premature parturition followed by dystocia, fetal death, retained placenta, and metritis. Additionally, corticosteroids administered during pregnancy can be teratogenic. Therefore, ASERVO EQUIHALER should only be used in pregnant mares if the potential benefit justifies the potential risk to the fetus.

Administration of corticosteroids may worsen existing bacterial, fungal, or viral infection. Secondary infections should be ruled out before prescribing ASERVO EQUIHALER. Inhaled corticosteroids should be used with caution, if at all, in horses with active infection of the respiratory tract.

If clinical signs do not improve or worsen despite administration of ASERVO EQUIHALER, the prescriber should consider additional diagnostic evaluation.

Due to the potential for exacerbation of clinical signs of laminitis, glucocorticoids should be used with caution in horses with a history of laminitis, or horses otherwise at a higher risk for laminitis.

Use with caution in horses with chronic nephritis, equine pituitary pars intermedia dysfunction (PPID), and congestive heart failure.

Concurrent use of other anti-inflammatory drugs, such as non-steroidal anti-inflammatory drugs (NSAIDs) or other corticosteroids, should be approached with caution. Due to the potential for systemic exposure, concomitant use of NSAIDs and corticosteroids may increase the risk of gastrointestinal, renal, and other toxicity. Consider appropriate wash out times prior to administering NSAIDs or additional corticosteroids.

Other Warnings: Do not use in horses intended for human consumption.

Store at 15-30°C (59°-86°F), with excursions permitted up to 40°C (104°F). Protect from freezing. Use within 12 days of activation.

Use by _____

ASERVO® and EQUIHALER® are registered trademarks of Boehringer Ingelheim Vetmedica GmbH, used under license. The Horse Head Logo is a trademark of Boehringer Ingelheim Animal Health USA Inc.
© 2020 Boehringer Ingelheim Animal Health USA Inc. All rights reserved.

Marketed by:
Boehringer Ingelheim Animal Health USA Inc.
Duluth, GA 30096

Made in France 449303-00



ASERVO® EquiHaler®

- A Nostril adapter
- B Breath indicator
- C Air inlet
- D Handle
- E Prime and release lever
- F Piercing element with fill indicator

ASERVO EQUIHALER

ciclesonide spray, metered

Product Information

Product Type	PRESCRIPTION ANIMAL DRUG	Item Code (Source)	NDC:0010-4493
Route of Administration	NASAL		

Active Ingredient/Active Moiety

Ingredient Name	Basis of Strength	Strength
CICLESONIDE (UNII: S59502J185) (CICLESONIDE - UNII:S59502J185)	CICLESONIDE	343 ug

Packaging

#	Item Code	Package Description	Marketing Start Date	Marketing End Date
1	NDC:0010-4493-01	1 in 1 CARTON		
1		140 in 1 INHALER		

Marketing Information

Marketing Category	Application Number or Monograph Citation	Marketing Start Date	Marketing End Date
NADA	NADA141533	07/01/2020	

Labeler - Boehringer Ingelheim Animal Health USA Inc. (007134091)

Revised: 9/2021

Boehringer Ingelheim Animal Health USA Inc.